

## FTF-50-RD Centrifugal Feeder

*Designed for Quiet, High Speed Feeding*



### Product Overview:

Shibuya Hoppmann's standard FTF-50 rigid disc centrifugal feeder is designed to feed a variety of products in a food-grade environment with its unique bowl design. Product is metered into the bowl and brought out to the bowl rim where a series of qualifiers gently orient the part for transfer to various downstream inline devices.

### Product Specifications:

|                          | <u>ANSI</u> | <u>Metric</u> |
|--------------------------|-------------|---------------|
| A. Outside Diameter      | 71"         | 1804mm        |
| B. Frame Height          | 47" ± 1.5"  | 1194mm ± 40mm |
| C. Discharge Height      | 36" ± 2"    | 914mm ± 51mm  |
| D. Bowl Outside Diameter | 56"         | 1422mm        |
| E. Bowl Inside Diameter  | 47.10"      | 1196mm        |
| F. Rim Width             | 4.13"       | 105mm         |
| G. Bowl Depth            | 7.10"       | 180mm         |
| H. Level Foot Adjustment | 3.00" ± 1"  | 76mm ± 25mm   |

### Standard Models:

| Part Number   | <u>FT501RLDFA</u> | <u>FT501RLAFA</u> |
|---------------|-------------------|-------------------|
| Motor Style   | DC                | AC                |
| Horsepower    | 3/4 hp            | 3/4 hp            |
| Motor Voltage | 90V               | 208-230/460V      |

### Standard Features:

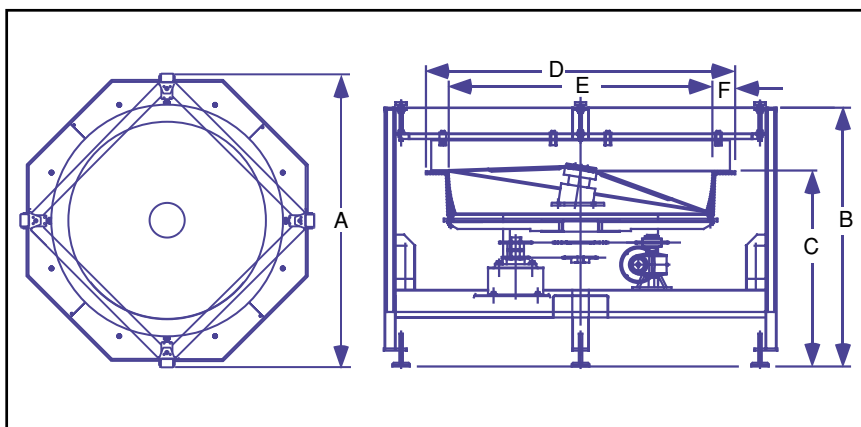
- All stainless steel construction
- FDA approved ABS vacuum formed disc
- Teflon hard-coated finished aluminium bowl
- Washdown motor(s)

### Available Options:

- Polycarbonate covers
- Dual motor drive system

### Required Accessories:

|                   |                  |            |
|-------------------|------------------|------------|
| Square Frame      | <u>CW</u>        | <u>CCW</u> |
| Backup Ring ..... | BUCWFT50FU ..... | BUCCT50FU  |



Shibuya Hoppmann Corporation strives to improve its products and reserves the right to change or discontinue specifications & designs shown in this brochure without notice and without incurring obligation. 01/07